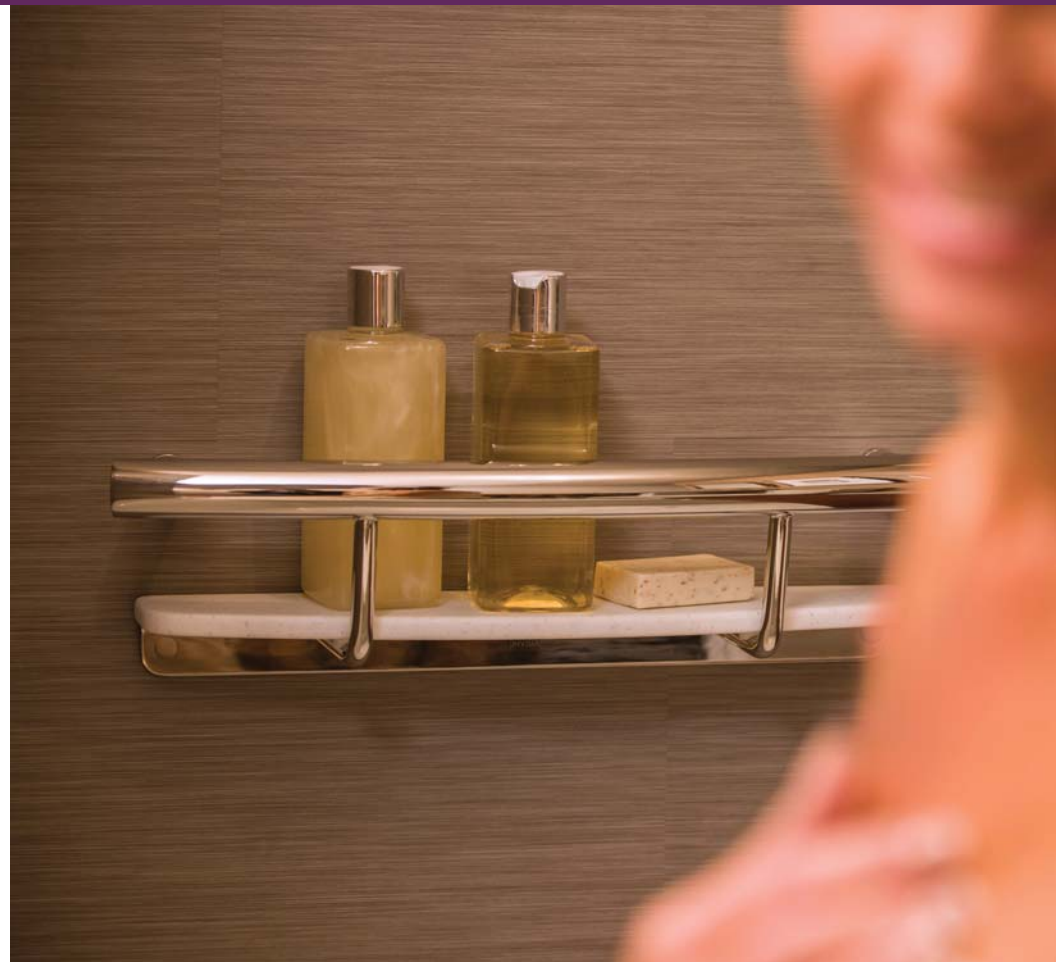


INVISIA

LIVE BEAUTIFULLY



Built-in Niche



Shampoo Shelf

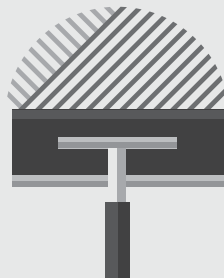
Save Time. Save Money.

6-8hrs

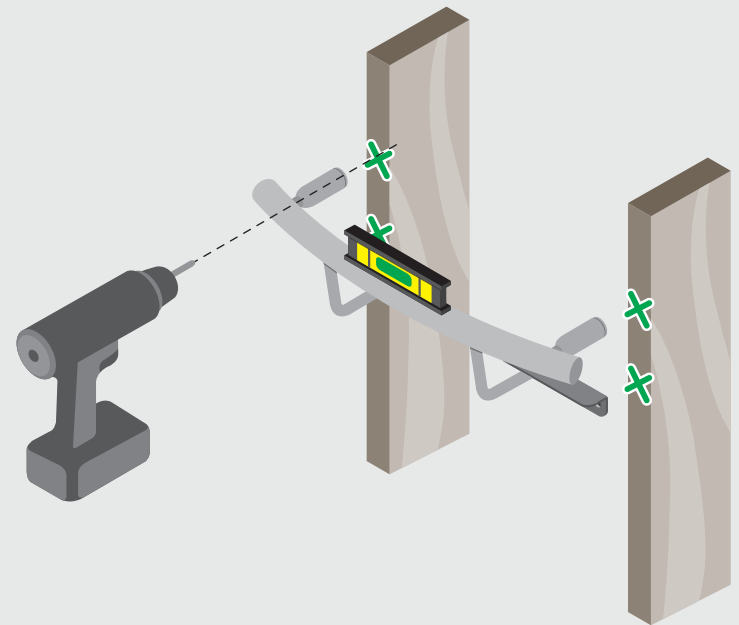
measuring,
cutting, framing,
securing, etc.



tiling, cutting,
sealing, drying time,
grouting, etc.



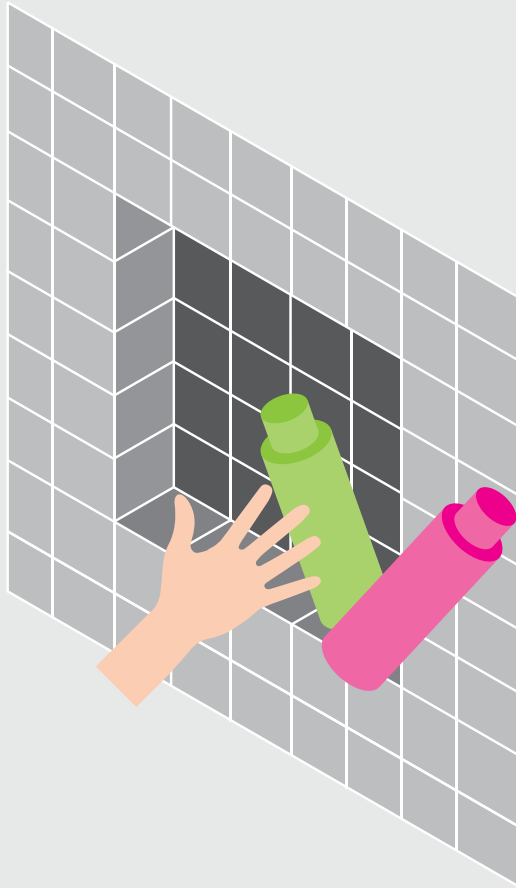
1 hr max



The process of installing a Built-in Niche is labour intensive (measuring, cutting, framing, securing, tiling, sealing, grouting, etc.). This time consuming process can extend time on the jobsite by several days (approx 6-8 hours plus drying / setting).

Invisia makes the job of installation quick and easy. Simply align the mounting points with structural wood studs (on 16" centers), level, drill and install the 4 screws. If stud placement is not optimal, use standard blocking techniques.

Added Value: Safety.

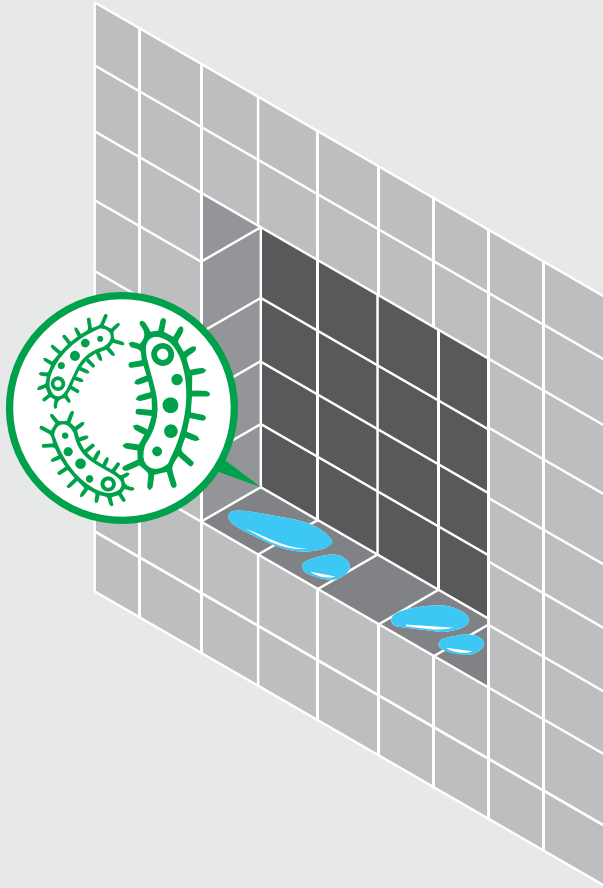


Built-in Niches can only do one thing: store personal items. If your customer slips in the shower, a niche cannot offer any support. Additionally, care must be taken to ensure items do not fall out of the niche (which are usually slanted towards the tub for drainage).



Invisia's Shampoo Shelf has an integrated grab bar located in front of shampoo bottles, so it is the first thing to grab if a fall occurs. The shampoo shelf will support a user up to 500lbs / 227kg. Also, the grab bar ensures the bottles do not slide off the shelf.

No Corners. Easy Clean.

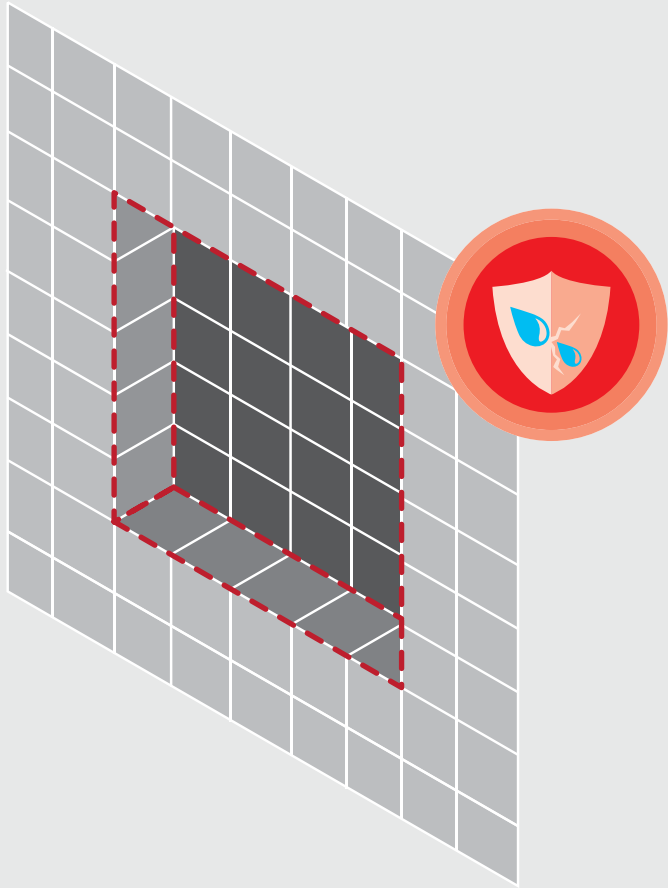


A Built-in Niche will get water inside it (either directly from the shower or indirectly from handling personal care items). When water settles in the corners of the niche, mold will grow. These small spaces will require TLC to keep bacteria under control.



Invisia Shampoo Shelf features a solid surface tray that is removable for easy cleaning. It is a flat surface that can be easily wiped down, or placed into a dishwasher to be disinfected.

Less Seams. Less Hassle.



Built-in Niches have many tiled seams that must be sealed to prevent water penetration. The seams can be long in length and numerous, with the responsibility on the contractor to ensure the seal is 100% water tight.



Invisia's Shampoo Shelf features rubber gaskets on the mounting points that are compressed against the tile to provide a water tight seal.

Built-in Niche



Shampoo Shelf

- | | | | |
|-----------------------|------------------------------------------------------------------------------------------------------|--------------------------------------------------|----------------------------------------------------------------------------------------------|
| A dark grey 'X' icon. | Labour intensive installation
(measuring, cutting, framing,
tiling, grout, drying times, etc.) | A dark grey circle containing a white checkmark. | Straight forward installation
(connection points align with
wall studs on 16" centers) |
| A dark grey 'X' icon. | No added safety
benefits | A dark grey circle containing a white checkmark. | Integrated safety grab bar
supports 500lbs / 227kgs |
| A dark grey 'X' icon. | Difficult to clean
inside corners; prone
to mold buildup | A dark grey circle containing a white checkmark. | Easy to clean
solid surface tray
is removable |
| A dark grey 'X' icon. | More seams have a
higher potential for
water penetration | A dark grey circle containing a white checkmark. | Easy to create seal against
water penetration |